

August
24

2016 Wednesday 24th August



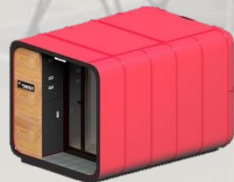
Air temperature +35C



A/C regular power consumption 800W



Thermo-graphic camera



E-Soltec portable House

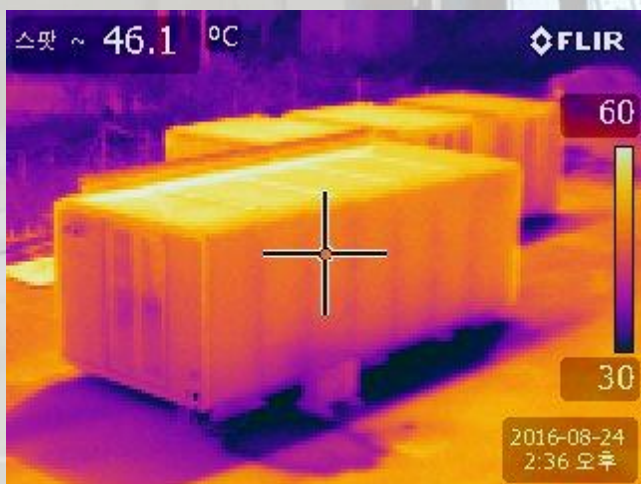
Conditions:

1. Outside air temperature +35C
2. A/C regular power consumption 800W
3. A/C was turned on 1 hour before thermo-graphic checking

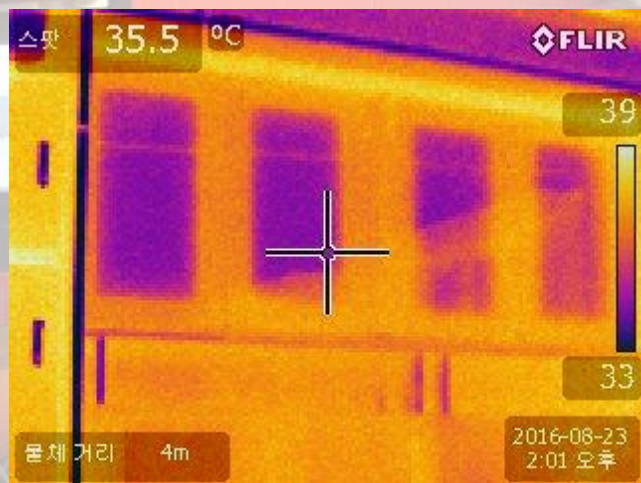
Results:

1. Exterior metal panel temperature 60C, temperature inside the House – 24C (awesome 36C difference!)
2. Hour energy consumption – 0.4kw, which is only 50% of regular consumption, proving great energy efficiency
3. No air leakage except parts of door and windows, which helps to maintain pleasant temperature conditions inside

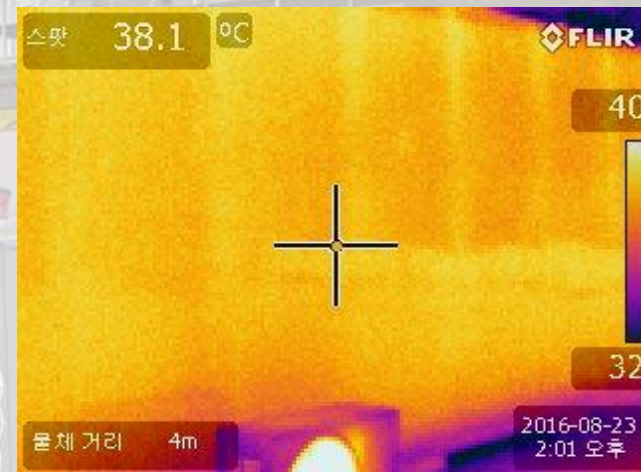
Metal panel temperature +60C (especially top-panel). Small leakage spots – doors, windows (parts made of glass)



Clear difference between temperatures inside and outside: cold air inside the house (purple) contacts with window glass



Absolutely no air leakage in the metal panel. Regardless of how panel is hot (in our case – +60C), temperature inside the House is cool



Hour energy consumption – 0.4kw, which is only 50% of regular consumption, proving great energy efficiency